



Events at

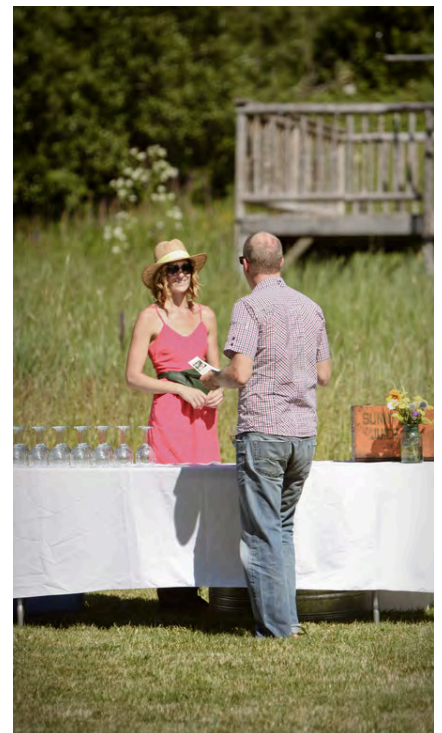
WILLOW-WITT RANCH

Since 1985



Willow-Witt Ranch

is a 445-acre gem within the Cascade-Siskiyou National Monument near Ashland, Oregon. In this magical valley, owners Suzanne Willow and Lanita Witt have stewarded diverse forests and wetlands and established a small certified organic working farm.



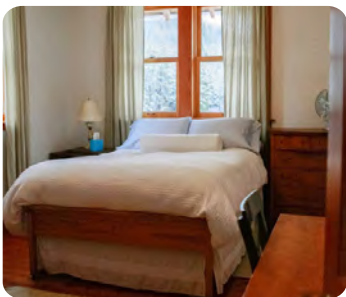
Meadow House Event Rental



3 BEDROOM HOME WITH YARD AND WRAPAROUND PORCH

This three-bedroom, two-bath house sleeps up to ten with three twin beds in the West Bedroom, a queen bed and single sleeper sofa in the East Bedroom, a double bed in the downstairs bedroom, and a comfortable double sleeper sofa in the living room. The Meadow House is off-grid, with its own solar system, and has Wi-Fi. Cell service is limited.

The passive solar house is comfortable in all seasons and features a sunny wraparound porch that invites relaxation, meditation, and conversation with family and friends, and has views of meadows, mountains, and wildlife. The open yard can be the setting for small weddings, intimate dinners, or children playing. The south-facing porch is the perfect site for viewing the evening alpenglow. The Meadow House can be combined with other accommodations for larger groups.



INCLUSIVE OPTION INCLUDES

- 1 FARM TOUR - DATE AND TIME TO BE ARRANGED
-
- 2 NIGHTS IN THE 3 BEDROOM, 2 BATH MEADOW HOUSE
-
- 8' PONDEROSA PINE FARM TABLES AND 4' PONDEROSA PINE BENCHES
-
- CHAIRS FOR ALL GUESTS
-
- FULL DINNER TABLE SETTINGS
-
- BAR & OLCC LICENSED BARTENDERS
-
- SET UP AND TAKE-DOWN OF ALL RENTALS
-
- VENUE COORDINATOR - INCLUDES 2 PLANNING MEETINGS AND 6 HOURS DAY OF
-
- PARKING ASSISTANCE

Rental Options

Day Use Only

5 HOURS, DOWNSTAIRS AND YARD ONLY

UP TO 10 GUESTS \$500
UP TO 25 GUESTS \$600

Inclusive

SEE THE LIST ABOVE

UP TO 10 GUESTS \$3,200
UP TO 30 GUESTS \$4,800
UP TO 60 GUESTS \$7,150

A-La-Carte

LODGING ONLY

UP TO 10 GUESTS \$1,280
UP TO 30 GUESTS \$1,800
UP TO 60 GUESTS \$2,700

+ \$150 CLEANING FEE
+ \$300 REFUNDABLE SECURITY DEPOSIT

EVENT INSURANCE REQUIRED

Campground Event Rental



CAMPGROUND WITH COOKHOUSE AND BATHHOUSE

The Camps at Willow-Witt Ranch

Experience privacy and community within the comfortable circle of the central Cookhouse and Bathhouse. In addition, this lively part of the ranch offers our wonderful hot water outdoor showers. Experience the sense of discovery, adventure, stillness, and peace that permeates this high mountain ranch. Let bird song wake you to a view of wetlands, wildflower meadows, and forests. The wooded nature of our camp area allows for a wilderness experience, yet you're close enough for an easy walk to the farm.

EVENT INSURANCE IS REQUIRED FOR ALL EVENTS AT WILLOW-WITT RANCH.



Non-Exclusive Package

USE OF THE CAMPGROUND
GATHERING AREA

•
BATHHOUSE

•
OUTDOOR SHOWERS

•
COOKHOUSE

•
4 WALL TENTS

•
12 TENT SITES

•
OTHER FAMILIES MAY BE IN THE
CAMPGROUND AND USING
FACILITIES

•
DOES NOT INCLUDE ANY RENTALS.
PLEASE SEE RENTAL PAGE FOR
ADD-ONS

DAY USE <50 GUESTS \$400
2 NIGHTS <30 GUESTS \$4000
2 NIGHTS <50 GUESTS \$6000

+ \$400 CLEANING FEE
+ \$500 SECURITY DEPOSIT

Exclusive Package Includes

3-DAY EXCLUSIVE USE OF CAMPGROUND

•
1 FARM TOUR - DATE & TIME TO BE
ARRANGED

•
4 FURNISHED WALL TENTS (6 BEDS TOTAL)

•
12 TENT SITES

•
2 OUTDOOR HOT WATER SHOWERS

•
ADA-ACCESSIBLE BATHHOUSE

•
EXCLUSIVE USE OF ENTIRE CAMPGROUND
INCLUDING COOKHOUSE

•
8' PONDEROSA PINE FARM TABLES AND 4'
PONDEROSA PINE BENCHES

•
CHAIRS FOR ALL GUESTS

•
FULL DINNER TABLE SETTINGS

•
BAR & OLCC LICENSED BARTENDERS

•
SET UP AND TAKE-DOWN OF ALL RENTALS

•
VENUE COORDINATOR - INCLUDES 2
PLANNING MEETINGS AND 6 HOURS DAY
OF

•
PARKING ASSISTANCE

•
ADA-ACCESSIBLE PATHWAYS

•
*VIEW CAMPGROUND DETAILS FOR
ACCESSIBILITY AND AMENITIES INCLUDED*

<75 GUESTS \$8,500

<150 GUESTS \$11,000

<200 GUESTS \$14,000

+ \$400 CLEANING FEE
+ \$500 SECURITY DEPOSIT

The Campground Details



FACILITY AMENITIES

- The ADA-accessible Bathhouse
- Tent sites and four furnished wall tents.
- Trash and recycling removed twice daily or as needed.
- Parking assistance is required and included for one event of fifty or more guests. Parking for additional events of fifty or more guests, is \$100/hour.



COOKHOUSE

The ADA-accessible Cookhouse at the Camps at Willow-Witt Ranch includes two residential ranges and a commercial range. It is set up with two cooking areas, each with a prep sink, cutting table, and prep table. There are two 3-hole sinks and stainless cabinets for all dishes, tableware and cooking utensils. The Cookhouse is stocked with pantry essentials such as spices, flours, sugars, oils, and vinegars. We also provide teas and drip coffee makers; bring your own coffee. The Cookhouse contains two sitting areas with wood stoves and comfortable chairs.



LODGING

- Wall Tents are furnished with superb mattresses, luxurious cotton bedding, down duvets, towels, wood stoves and private decks.
- Group Tents have cots/bunks, mattresses, and wood stoves.
- Tent sites have room for 1 tent, up to 6 people.
- The ADA-accessible Bathhouse includes 5 toilets and 3 showers. 2 additional portable toilets are provided if over 150 guests.
- 2 outdoor hot water showers.
- The Camp Host is on-site and available until 8:00 pm.
- Parking for up to 5 trailers or small RV's (no hookups) can be purchased at \$60/unit/night.



PROPERTY RESTRICTIONS

- Disposable or compostable service or tableware is NOT allowed.
- All dishes must be hand-washed by end of the evening, The Cookhouse does not have a dishwasher yet.
- No smoking or vaping allowed anywhere on the property.
- No open flames are allowed on the property.
- All alcohol provided by clients must be served by an OLCC-licensed server hired by Willow-Witt Ranch. Alcohol service ends at 10pm.
- Wine and Beer service only. No hard alcohol beverages or cocktails will be permitted.
- No dogs or pets are allowed.

Lodging



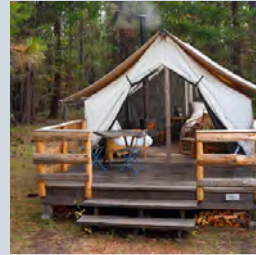
ADDITIONAL LODGING OPTIONS



Meadow House

SLEEPS UP TO 10
2-NIGHT STAY \$1,280
ADDITIONAL NIGHT \$640

+\$150 CLEANING FEE
+\$300 SECURITY DEPOSIT



Furnished Wall Tents

4 PERSON - \$200/TENT/NIGHT
(2 TENTS)

2 PERSON - \$160/TENT/NIGHT
(2 TENTS)

+\$50 CLEANING FEE/TENT

LUXURIOUS BEDS, LINENS, AND WOOD STOVE



Farmhouse Studio

SLEEPS UP TO 6
2-NIGHT STAY \$600
ADDITIONAL NIGHT \$300

+\$100 CLEANING FEE
+\$200 SECURITY DEPOSIT



Tent Sites

MAX 1 TENT/ 6 PEOPLE PER SITE
\$60/SITE/NIGHT

INCLUDES THE USE OF ALL
CAMPGROUND FACILITIES



Group Tents

2 PERSON TENT \$120/TENT/NIGHT
(3 AVAILABLE)

4 PERSON TENT \$160/TENT/NIGHT
(2 AVAILABLE)

10 PERSON TENT \$300/TENT/NIGHT
(5 AVAILABLE)

+\$25 CLEANING FEE/TENT

INCLUDES COTS, MATTRESSES, TOWEL SETS, AND WOOD STOVE.
DOES NOT INCLUDE BEDDING OR SLEEPING BAGS.



This working farm uses Maremma livestock guardian dogs. No dogs or pets are allowed.

Rentals at the Ranch



TABLES/CHAIRS

FARM TABLES, 8' PONDEROSA PINE	\$40
FARM TABLE BENCHES, 4' PONDEROSA PINE	\$5
WOOD/METAL FOLDING CHAIRS (INCLUDES CHAIR PAD)	\$2.50

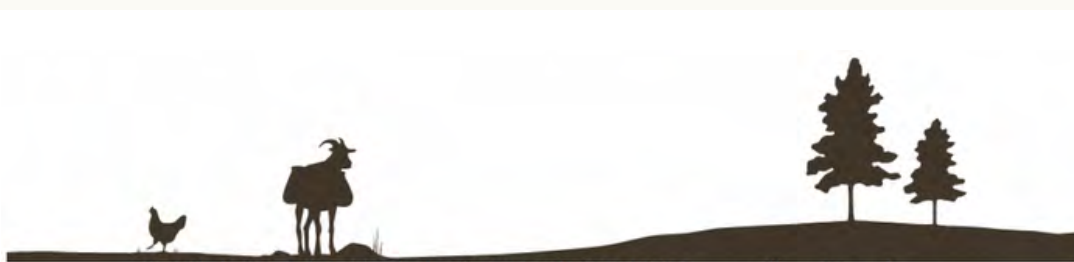


TABLEWARE

DINNER PLATES, WHITE 11"	\$0.60
DESSERT PLATES, WHITE, 7"	\$0.60
FLAT WARE: FORK, KNIFE, SPOON/EA.	\$0.25
DRINKING JARS, PINT	\$0.40
DRINKING JARS, HALF PINT	\$0.25
WINE GLASSES, 10 OZ	\$0.75

EXTRAS

IN HOUSE PA SYSTEM	\$250/DAY
ADDITIONAL PARKING ASSISTANCE \$50/PERSON PER HOUR	\$50
CANOPY, WHITE 10'X10', 2 AVAILABLE	\$50
CANOPY, GREEN 10'X10'	\$50
CANOPY, BLUE 20'X10', 1 AVAILABLE	\$120
CANOPY, GREEN 20'X10', 2 AVAILABLE	\$120
CANOPY, YELLOW 20'X10', 1 AVAILABLE	\$120
*ALL CANOPIES INCLUDE SET UP	



658 Shale City Rd, Ashland, OR 97520 * 541-890-1998 * www.willowwittranch.com



Preferred Vendors

ALL VENDORS MUST BE PRE-APPROVED BY WILLOW-WITT RANCH.

CATERERS

Heart Full Catering
heartfullcatering.com
541-690-6533

Larks Home Kitchen
larksashland.com
541-488-1700 x1006

Smithfields Event Catering
smithfieldseventcatering.com
541-324-4590

Chef Kristen
chefkristencatering.com
541-531-6740

Simple Cafe Catering
541-973-3763

Wine Country Catering
winecountrycaters.com

DJ/ENTERTAINMENT

Blue Lightning Dance Band
bluelightningrocks.com
541-840-4736

Danielle Kelly Soul Project
daniellekellymusic.com
360-259-8062

DJ Gymineye
djgymineye@icloud.com
Facebook.com/gemineyedj

DJ Veach
djmedford.com
541-621-9510

Rich Templeton
templetonDJ.com
541-301-6408

Sights & Sounds
ssounds.com
541-476-8558

EVENT PLANNERS

Events with Becca
eventswithbecca.com
541-326-1051

Flourish Wedding & Events
flourisheventplanning.com
541-621-3749

FLORISTS

Beauty Grows Wild
beautygrowswild.com

Flora
weddingflora.com
541-846-0919

Freckled Fleurs
freckledfleurs.net

Penny and Lulu
541-779-1112
pennyandlulu.com

Jacklily
jacklilydesign.com

HAIR & MAKE-UP

Janice Moon
janicemoon.com
janicemoonart@gmail.com

Jayne Lee Make-Up Artistry
jamielee.makeup
541-816-4704

Whitney Audra Makeup Artistry
541-890-7464

PHOTOGRAPHERS

Lilys & Horns
lilysandhorns.com
541-622-5540

Lindsey Bolling
lindseybolling.com
541-890-8149

Rebekah Jule Photography
rebekahjule.com
541-210-3305

Red Aspen Photography
redaspenphotography.com
541-890-8149

Abram Katz
abramkatz.com

Savannah Rettinger
Savannah.bree@gmail.com
541-659-5752
IG @savvy_photo

RENTALS

Motif Event Rentals
motifeventrentals.com
541-531-3578

Party Place Event Rentals
partyplaceandevents.com
541-776-7729

The Tent Company
thetentcompany.online

VIDEOGRAPHERS

IndieGlow Films
indieglowfilms.com
858-625-1729

Second Look Videography
secondlookweddings.com
secondlookweddings@gmail.com

CAKES AND DESSERTS

Market of Choice
marketofchoice.com/bakery
541-488-2773

Sugar Rush Bakery
sugarushbakery.me
541-241-6727



WILLOW-WITT RANCH

Since 1985



Experience serenity in the Cascade-Siskiyou National Monument. Willow-Witt Ranch is dedicated to the conservation and regeneration of a unique ecosystem and the headwaters, wetlands, and forests that arise here. Willow-Witt Ranch events offer an outdoor venue and experience for you and your guests to interact with the open landscape, forests, trails, off-grid accommodations, and certified organic farm.

Our outdoor event seasons runs from June through October. Our year-round indoor accommodations are available anytime for small groups and gatherings.

We look forward to hosting you and your guests.

The Willow-Witt Ranch Family

Looking for wedding Info? Ask about our wedding packet